



# O365 IT HEALTH & RISK SCANNER

## Reducing Active Directory and IT Infrastructure Risk Exposure

Microsoft Active Directory is the single most important technology for a business as it enforces and maintains organizational data security, IT infrastructure access policies and rights across business applications and assets.

O365 IT Scanner delivers Risk Assessment reports for Active Directory after checking for 130 parameters.

### The need for Active Directory & IT Server Technology Risk Assessments:

An Active Directory not secured against Risk associated with Health, Security, Performance and Compliance leads to increased:

- 1 IT OPEX (directly/indirectly increasing frequency of troubleshooting).
- 2 IT Infrastructure Risk & Security Exposure.
- 3 Likelihood of downtime of Business-Critical Applications & Services.
- 4 Instances of disruption of Business Services.
- 5 Likelihood of failing IT Compliance checks and Audits.
- 6 IT Infrastructure's susceptibility to external attacks and internal breaches.
- 7 Loss of Business Revenue on account of IT Downtime.

## What can O365 IT Scanner help you achieve?

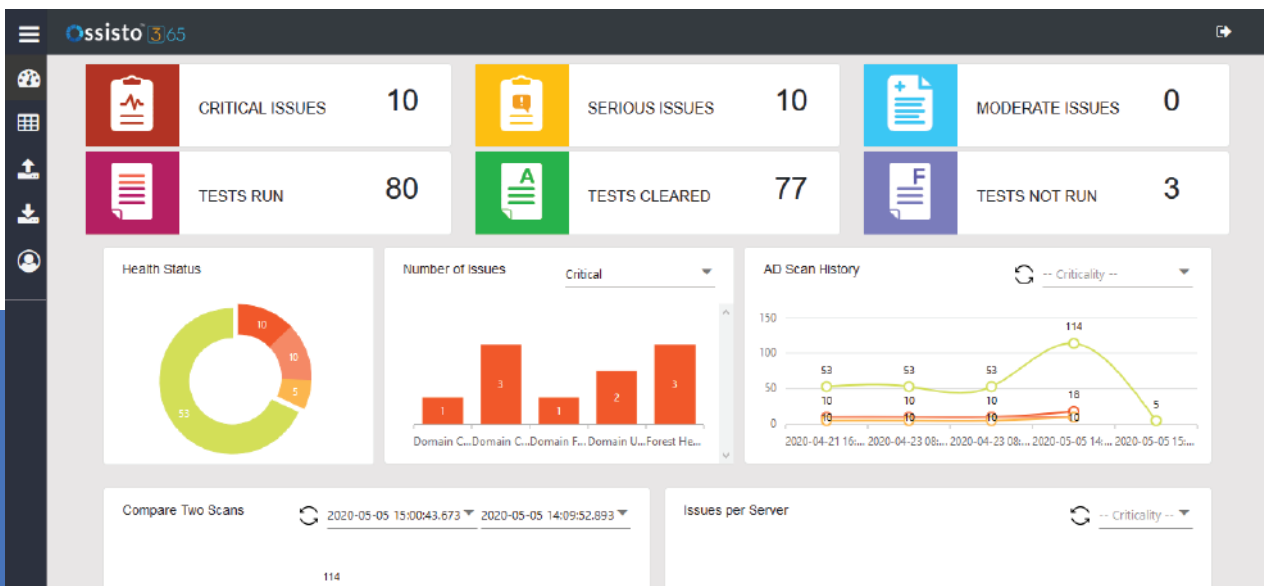
Manual Active Directory Assessments typically need at least a week's time, which is an exceedingly painstaking and resource exhaustive process:

Manual/Outsourced AD Assessment Process		Time*
1.	IT Expert runs a series of PowerShell Code to gather information on AD	2-3 Days
2.	AD information is collated into an initial report	
3.	IT Blogs and Resource Libraries are referenced for optimal setup guidelines	1-2 Days
4.	Based on reference research a remediation plan is created	2 Days
5.	Remediation process is delivered manually	2 Days
<b>Total Time for issue identification &amp; remediation</b>		<b>7 – 12 Days*</b>

VS

O365 IT Scanner		Time
1.	Download & install	2 mins.
2.	Provide AV exclusion	5 mins.
3.	Execute Assessment	15 – 30 mins.
4.	Report ready to view	5 mins.
5.	Customize/edit report	5 mins.
<b>Total Time</b>		<b>32 – 50 mins.</b>

\*Bigger IT environments may require more time.



O365 IT Scanner does a complete scan of Active Directory (regardless of the size of your infrastructure) within minutes. After checking the Active Directory for 130 parameters, the O365 IT Scanner AD Assessment Reports provide you :

- ▶ Overall Active Directory Health & Risk Status
- ▶ Risk Status of Active Directory Core Components
- ▶ List of Issues (with a severity rating\*)
- ▶ List of Affected Objects
- ▶ Impact details of every Issue
- ▶ Risk Remediation Guidelines & Recommendations

\* Severity level is classified as Good, Medium, Serious, Critical. Severity ratings are carefully structured by using Vendor's (Microsoft's) own guidelines and recommendations for AD and IT Best Practices as a benchmark.

# Powering Active Directory/IT Security Posture Hardening and More

Uncovering Active Directory issues that impact overall IT Risk & Security Posture is a complex process made easy by the IT Risk Assessment Practice Leads at Ossisto. The Solution is designed to deliver a range of benefits while simplifying IT Risk Assessment Initiatives, such as

## BENEFITS

### Functional Benefits

- ▶ Actionable insights on IT Infra available on-demand.
- ▶ Simple UI to execute Assessments rapidly.
- ▶ Visualize Risk Assessment Data in a Dashboard, get granular reports for technical review.
- ▶ Publish Custom Reports - Summarized reports, Detailed Reports & Technical Data Reports.
- ▶ Built-in scheduler to automate future assessments.



### Technical Benefits

- ▶ Technical issue discovery and fix guidelines are available readily.
- ▶ Cater to Technical & Functional user cases by exporting Assessment Data as documents or spreadsheets.
- ▶ 100+ Checks ensure full assessment coverage includes all essential components like DNS, GPO, OUs, DC, FGPP, etc.
- ▶ Run checks individually to export object lists, like Bad Logon Attempts.
- ▶ Historical Data Comparison lets you compare findings with results of past Assessments.



### Use Cases & Applications

- ▶ Get detailed IT Health & Risk Assessment Reports.
- ▶ Make IT Infrastructure more secure and less susceptible to critical failures, attacks and breaches.
- ▶ Identify configuration and setup parameters that are not in line with best practices and align them.
- ▶ Get actionable insights for positioning and driving change initiatives and Service Improvement Plans.

### System Requirements

**User :** Domain Administrator

**OS :** Windows Server 2012 R2, 2016, 2019 or newer

**.NET framework :** 4.5 or higher

**Disk Space :** 10 GB

**RAM :** 6 GB

[Schedule Demo](#)

[Become a Reseller](#)

[Contact Us](#)